

Lighting the Way to Safety



Since 1920

Safetylite®

“LIT” ANTI-SLIP GRAB HANDLE

Patent Pending

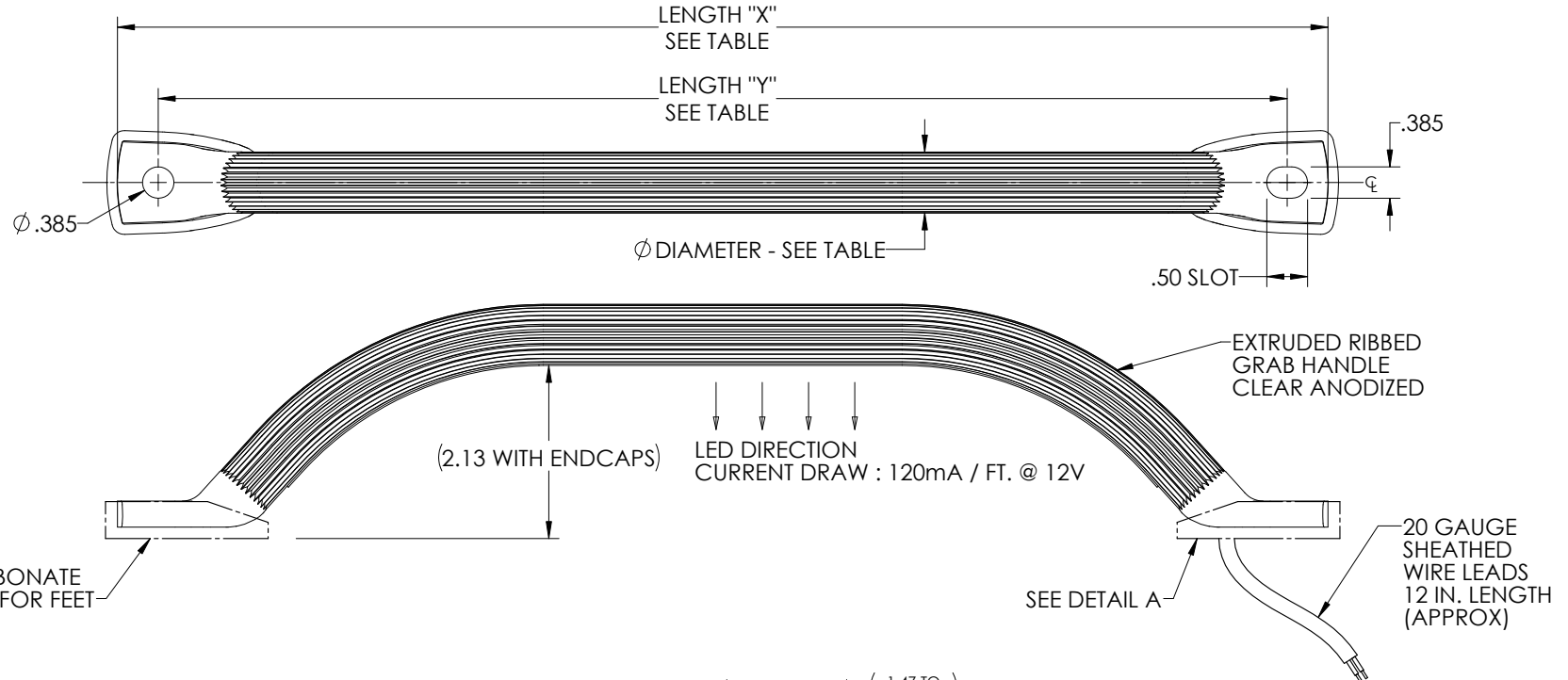
- 
- 300 Lbs. Pull Tested
 - Salt Spray Tested
 - IPX6 Water Resistant
 - 100 Lumen Per Foot
 - “Lit” 12V LED
 - Back Lit LED Light
 - Anti Slip – Ribbed
 - STD Lengths:
14”, 18”, 24”, 30”
 - 3/4” or 1 1/8” Diameter
Anodized Aluminum
 - Molded Foot Gaskets

Hansen’s NEW Safetylite® “Lit” ANTI SLIP Grab Handle is the perfect addition to your vehicle or trailer to increase the safety of the work place. Allows for easy identification of grab handles and illuminates the area for improved safety. The “RIBBED” Anti Slip feature adds hand grip improvement even in wet conditions.

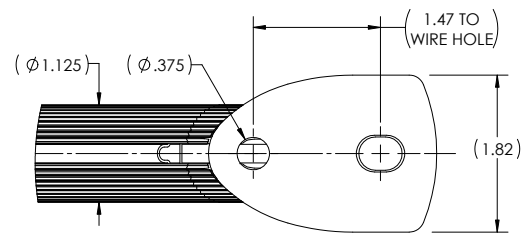
130 Zenker Road Lexington, SC 29072 | 1-800-850-8070 | www.hansenint.com

SAFETYLITE® FORMED AND LIT GRAB HANDLE

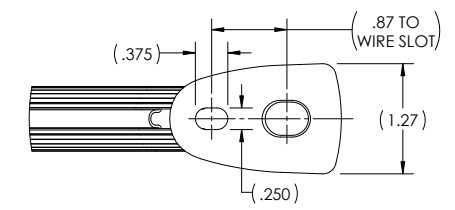
HANSEN INTERNATIONAL PATENT PENDING



HANSEN PART NO.	RAIL DIAMETER (IN.)	VOLTAGE	LENGTH "X"	LENGTH "Y"
GHRU06WH12V-14	3/4	12V	14 IN.	13 IN.
GHRU06WH12V-18	3/4	12V	18 IN.	17 IN.
GHRU06WH12V-24	3/4	12V	24 IN.	23 IN.
GHRU06WH12V-30	3/4	12V	30 IN.	29 IN.
GHRU09WH12V-18	1-1/8	12V	18 IN.	17 IN.
GHRU09WH12V-24	1-1/8	12V	24 IN.	23 IN.
GHRU09WH12V-30	1-1/8	12V	30 IN.	29 IN.



1-1/8" DIA. ENDCAP BOTTOM VIEW



3/4" DIA. ENDCAP BOTTOM VIEW

Weight	SHEET 1 OF 1	 LEXINGTON, S. CAROLINA	REV	ECNERN NO.	CHANGED BY	DATE CHANGED	APPROVED BY	DATE APPROVED
N/A	SCALE: 1:1		HANSEN INTERNATIONAL, INC. LEXINGTON, S. CAROLINA	-	-	STB	8-4-15	
VOL.	TOLERANCES (UNLESS OTHERWISE SPECIFIED)		MATERIAL: ALUMINUM					
N/A	3 PLCS. ± .005 2 PLCS. ± .01 FRACTIONS ± 1/64 ANGLES ± 1		FINISH: CLEAR ANODIZED					
CTE	R&D NUMBER: R13013-A	PROPRIETARY NOTICE: THIS DRAWING IS EXCLUSIVELY THE PROPERTY OF HANSEN INTERNATIONAL, INC. AND SHALL NOT BE COPIED OR PASSED ON TO A THIRD PARTY WITHOUT OUR PRIOR WRITTEN APPROVAL. WE WILL RETAIN ALL RIGHTS FOR PATENT ISSUE OR REGISTRATION OF DESIGN.	DESCRIPTION: SAFETY LITE FORMED AND LIT GRAB HANDLE					
CRITICAL TO FUNCTION		GEOMETRIC DIMENSIONING & TOLERANCING PER ASME Y14.5M-1994	SIZE Part Number: C					